

PHI DELTA CHI®



THE e-COMMUNICATOR

OF THE PHI DELTA CHI FRATERNITY

MAY 2026 [VOL 17; ISSUE 5]

77th GRAND COUNCIL

Register today for the [77th Grand Council](#), taking place **July 29th – August 1st, 2026**, at the Galt House Hotel in Louisville, KY. Brothers from across the country are invited to come together for a weekend of leadership, connection, and Brotherhood.



(Grand Council 26 - Chicago 1926)

Be sure to take advantage of early bird registration, available through June 19th, with late registration running from June 20th through July 19th.

[Registration Rates:](#)

- Collegiate: \$325 early | \$350 late
- Alumni: \$375 early | \$400 late
- Alumni Weekend: \$325 early | \$350 late
- Guest: \$250 early | \$275 late
- Guest Weekend: \$235 early | \$260 late
- Banquet Only: \$100

As an added incentive, the first 50 Brothers to purchase a full registration will receive a custom 77th Grand Council Louisville Slugger mini bat.



This year's Grand Council will also feature exclusive Phi Delta Chi apparel, with two official T-shirt designs created by [Delta Delta](#) and [Gamma Eta](#) Chapters. Pre-orders are due by June 30th.



Bourbon Tasting

To kick off the week, an optional bourbon tasting excursion is being planned for **Wednesday, July 29th**. This guided walking tour will depart from the hotel and include stops at three local distilleries, each featuring curated tastings. The cost for this experience will be \$100. If you are interested, please sign up using [this link](#) before May 29th.

Leader Development Day

Looking to strengthen your leadership skills? Join PLEI and PDC for Leader Development Day (LDD) on **Wednesday, July 29th** from 1:00–5:00 PM. This interactive workshop, *Diagnosing “Difficult People”: A Leader’s Framework for Navigating Challenging Relationships*, will provide practical tools to better understand and manage complex interpersonal dynamics through a hands-on, discussion-based approach. This course is limited to 30 participants, with registration set at \$99 for collegiates and \$149 for alumni.

📅 Wednesday, July 29, 2026

Leader Development Day (LDD) - Diagnosing “Difficult People”: A Leader’s Framework for Navigating Challenging Relationships

1:00 PM - 5:00 PM EDT

👉 Optional Add-On

[View Description](#) >

Blood Drive with the Red Cross

As part of our commitment to service, Phi Delta Chi will partner with the American Red Cross to host a [blood drive](#) on **Thursday, July 30th**, from 11:00 AM to 4:00 PM during the conference. With a critical blood shortage across the United States, this initiative provides Brothers with an opportunity to make a meaningful impact. Appointments are encouraged, though walk-ins will be accommodated as availability permits.

Life Member Reception

In addition to the Alumni Reception taking place on **Friday, July 31st** from 5:00–6:30 PM, we are excited to introduce an exclusive Lifetime Member Reception on **Thursday, July 30th**. This special event is open to all Life Member alumni—more details will be shared soon.

Be sure to review the [tentative schedule](#) for a full lineup of Grand Council events and descriptions. We look forward to welcoming you to Louisville for an unforgettable Grand Council experience!



✨ ENHANCE THE ALUMNI EXPERIENCE ✨



We are committed to providing meaningful, impactful programs and opportunities for our alumni, and your feedback is essential to that mission. By taking a few minutes to complete this survey, you will help us better understand what's working well, identify areas for improvement, and focus our efforts where they matter most to you. Your insights will directly shape future alumni initiatives and ensure the Phi Delta Chi alumni experience continues to grow and evolve.

Thank you for sharing your perspective and helping us build a stronger, more connected Brotherhood.

[Alumni Needs Survey 2026](#)





The PDC Toolkit: GreekTrack Guide

GreekTrack is an essential tool for Phi Delta Chi, helping Brothers stay connected while ensuring that Fraternity records remain accurate and up to date. To fully utilize the platform's capabilities, all Brothers—especially those in officer roles—are encouraged to complete the GreekTrack 101 course, which provides a step-by-step overview of available tools and features.

As the academic year comes to a close, chapters will begin transitioning members into new leadership roles and preparing graduating Brothers for alumni status. Below are key guidelines to support a smooth transition process:

How to Transition Officers:

- The transition of officers is a role that is automatically delegated to the **Worthy Chief Counselor**
 - The WCC will need to go to Manage Membership and from there can choose “Transition Officers & Advisors”
 - The standard officer breakdown will automatically be built in.
 - In the “Member’s First & Last Name” column, you can type in Brother’s name to add them to the position
 - Clicking the eraser icon  will remove the Brother from the position
 - At the bottom, additional officer positions can be added using the “+ Add Officer / Advisor” button
 - Multiple people can be delegated to the same role. This can be beneficial during Worthy transitions
 - Note: until the person is removed from the position, they will have access to the duties delegated to that Worthy position
- To update the privileges of officers, go to Settings and click “Officer Positions & Privileges”
 - Click the padlock icon  next to the each position to update privileges
 - Additional positions can be added on the right hand side of the screen
 - Privileges should be reviewed at least yearly

Graduating Brothers should be transitioned to Alumni status at the end of their final semester, ideally in coordination with graduation rituals.

Transitioning Graduating Brothers to Alumni Status:

The transitioning of Brothers to Alumni status is a duty that can be delegated by the Worthy Chief Counselor to any position. It is recommended that this duty be given to both the WMA and the WAL as the WMA may use this role to transition Brothers from Candidates to Brothers and for the WAL to transition Brothers to Alumni.

- Whomever is in charge of transitioning Brothers, go to Manage Membership → Transition Members.
 - This page determines the official status of each Brother and is critical for accurate documentation, including chapter dues and membership records. On this page, you can:
 - Add Prospects (useful during recruitment for sending updates via SMS or email)
 - Create Candidate Class (required for access to training materials)
 - Initiate Candidates (submit within 72 hours after Initiation)

- Pre-Graduation form (**New this year!** “Update BEFORE Graduating Members” collects personal email addresses and graduation dates)
- Graduate Brothers to Alumni status (submit after the graduation date listed in their profile)

Transition Members

Below you will see all of your member's official Phi Delta Chi membership statuses. Use the tools below to report to the national Phi Delta Chi office of any membership status changes. An invoice will be generated for your chapter if a payment is required to make this transition.

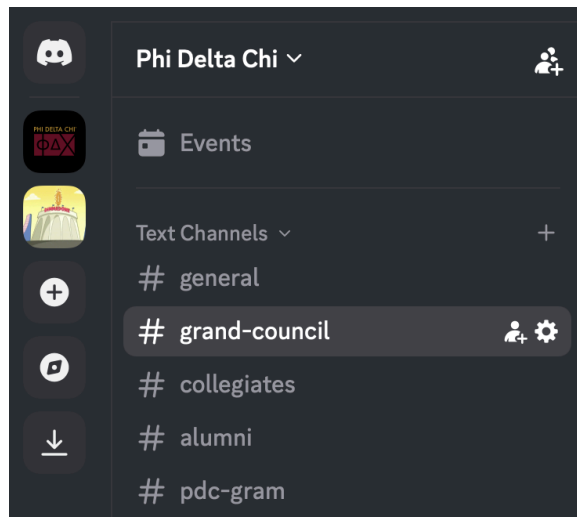
[✎ Update BEFORE Graduating Members](#)

Prospect	Candidate	Member	Alumni
Includes the <i>Prospect, Faculty Prospect</i> account types.	Includes the <i>Candidate, Faculty Candidate</i> account types.	Includes the <i>Officer, Active</i> account types.	Includes the <i>Advisor, Alum, Faculty Brother (Non-Advisor)</i> account types.
<div style="background-color: #800000; color: white; padding: 5px; margin-bottom: 5px;">+ Add prospect</div> <div style="font-size: small; margin-bottom: 5px;">With selected prospects...</div> <div style="border: 1px solid #ccc; padding: 2px; width: fit-content; margin-bottom: 5px;">Create Candidate Class »</div> <div style="font-size: small; margin-bottom: 5px;"><input type="checkbox"/> Select All</div>	<div style="font-size: small; margin-bottom: 5px;">With selected candidates...</div> <div style="border: 1px solid #ccc; padding: 2px; width: fit-content; margin-bottom: 5px;">Initiate Candidates »</div> <div style="border: 1px solid #ccc; padding: 2px; width: fit-content; margin-bottom: 5px;">« Drop Candidates</div> <div style="font-size: small; margin-bottom: 5px;"><input type="checkbox"/> Select All</div> <div style="font-size: small; margin-bottom: 5px;"><input type="checkbox"/> Test Person ✎</div>	<div style="font-size: small; margin-bottom: 5px;">With selected members...</div> <div style="border: 1px solid #ccc; padding: 2px; width: fit-content; margin-bottom: 5px;">Graduate Members »</div> <div style="font-size: small; margin-bottom: 5px;"><input type="checkbox"/> Select All</div>	<div style="font-size: 2em; color: blue; margin-bottom: 5px;">👤</div>

By keeping your chapter roster updated, you help maintain accurate Fraternity records and ensure ongoing communication. To stay connected after graduation, it is strongly recommended that Brothers provide a personal email, as university accounts are often deactivated after graduation. Chapter officers can enter these on the pre-graduation form and graduation form.



DISCORD



Discord continues to serve as a valuable platform for communication and connection within Phi Delta Chi. It provides Brothers with an accessible space to engage in discussions across a variety of topics, including Merch Marketplace, alumni and collegiate engagement, study and pharmacy resources, leadership roles, and both current and former regional groups.

This platform offers an opportunity to ask questions, share insights, and stay informed on Fraternity news and updates. It has also become an essential tool during Grand Council, allowing for real-time communication regarding workshops, continuing education sessions, and Brotherhood events.

If you are not yet a member of the server, we encourage you to join and stay connected with Brothers throughout the year.

[DISCORD](#)



ALUMNI FOUNDATIONS REPORT - DUE MAY 31ST

The [Alumni Foundations Report](#) is now open and will be due on **Sunday, May 31st, 2026.**

The [Alumni Foundations Program](#) (AFP) serves as Phi Delta Chi's primary tool for assessing alumni chapter activity, maintaining communication, and identifying opportunities to better support chapters. Completion of this report is essential for your chapter to remain in good standing and eligible for the [Outstanding Alumni Chapter Award](#). It also provides a valuable opportunity to reflect on your chapter's accomplishments over the past year.

Alumni Foundations Report (AFP) 2026

The Alumni Foundations Program was established in 1998 to assess Alumni Chapter activity level and to increase communication with the National Office. In accordance with Chapter VII, Number 3 of the Bylaws, Alumni chapters shall submit to the Executive Council once each year a report covering information required by the Executive Council or by the Grand Council. The Alumni Foundations Program Report is required for all Alumni Chapters wishing to maintain actively chartered status. The Alumni Foundations Program Report is due on May 31. Be sure to have the following files and information available before beginning: * Current chapter constitution or by-laws * Year of attendance and delegate name for the most recent Grand Council at which the Alumni Chapter was represented * Year of attendance, region, and delegate name for the most recent Regional Conference at which the Alumni Chapter was represented Outstanding Alumni Chapter Award nominations: Nominations for the Outstanding Alumni Chapter Award may be submitted on this form or may be emailed separately to pdar@phideltachi.org. See below for submission guidelines. Please email any questions, suggestions, and/or concerns to gvpaa@phideltachi.org, pdar@phideltachi.org and assistantgvpaa@phideltachi.org. You may also contact your Regional Director for Alumni Affairs for assistance.

[View Form](#)

Before beginning your submission, please ensure you have the following information and documents prepared:

- Your current chapter constitution and by-laws
- The year of attendance and delegate name for the most recent Grand Council at which your alumni chapter was represented
- The year of attendance, region, and delegate name for the most recent Regional Conference at which your alumni chapter was represented

Nominations for the [Outstanding Alumni Chapter Award](#) (optional) are also due by May 31st and may be submitted through the same form as the AFP report. Please refer to the submission form on GreekTrack for additional guidelines.

The Outstanding Alumni Chapter Award will be presented at the [77th Grand Council](#) in Louisville, KY, taking place July 29th – August 1st.

If you have any questions, please contact your [Regional Director for Alumni Affairs](#).



BROTHERHOOD FROM COAST TO COAST

Interested in seeing what's happening across Phi Delta Chi? Explore the Events Calendar on [GreekTrack](#) by navigating to **Events > Calendar**.

Event Calendar

Alpha Theta's Calendar Eastern Region Calendar National Calendar

Filter events by: Meetings Service Projects Candidate Projects Initiations Other Events

« May 2026 » today

Sun Mon Tue Wed Thu Fri Sat

1 2

This tool also allows you to share your own chapter events with Brothers nationwide. Whether your event is local, regional, or open to all, you can easily upload and promote it to the appropriate audience.

To create an event, simply select + **Add Event** and complete the event details. GreekTrack provides flexible features, including the ability to set registration deadlines, control visibility, limit attendance, and send invitations to specific groups or chapters.

Create New Calendar Event

Event Title

Date of Event : pm to : pm

All day Repeat...

Location

Requirement Credit *This event will not count towards any requirement*

Additional Information

Advanced Options

Require Attendance Require attendance for this event

Mobile Check-in Require attendees to check-in on their mobile phones to receive credit

Allow Sign-ups on 04/21/2026 12 : 00 pm

Lock Sign-ups on : pm

Start sharing and exploring events to stay connected across the Brotherhood!

GLIMMERS



Tau Chapter raised over \$12,000 at their annual Phil Slater 5K! Held in memory of Brother Phil Slater, this event promotes mental health and suicide awareness while bringing together students, faculty, and community members.



Alpha Sigma Chapter proudly made a meaningful impact at the 34th Annual Winter Walk benefiting Sarah's Circle, attending with the largest group of participants. In recognition of their outstanding support and commitment to service, the chapter has been given the honor of naming a multipurpose room at Sarah's on Lakeside—now known as the *Phi Delta Chi Alpha Sigma Oasis*.

Sarah's Circle is dedicated to providing a full continuum of services for women experiencing homelessness, including housing, essential resources, and supportive services to help them achieve permanent stability. Since its founding in 1979, the organization has remained rooted in compassion and service, working toward a vision of safe and secure housing for every woman in Chicago. The Alpha Sigma Chapter's involvement reflects Phi Delta Chi's commitment to service and advocacy, supporting initiatives that create lasting change in communities. Their contribution not only supports the mission of Sarah's Circle but also leaves a tangible legacy that will impact countless women for years to come.



HIV NAPLEX REVIEW

Dena Dillon (Alpha Alumni) will be leading an HIV-focused NAPLEX review session on Tuesday, June 2nd from 6:00–8:00 PM (CT). The session will be offered both virtually via Zoom and in person at the University of Iowa College of Pharmacy—attendees joining in person can also enjoy free pizza.

This session will cover key HIV topics, including antiretroviral therapy, drug interactions, adherence, and primary care considerations. Please register using the link below to secure your spot.

[REGISTER HERE](#)

.....

✨ Final Call: Share Your Chapter & Alumni Highlights

Time is running out to be featured in the next edition of *The Communicator*! Submissions are due by **May 8th**, and we're looking to showcase the stories, achievements, and moments that define our Brotherhood—we don't want to miss yours. From chapter events and initiations to recruitment successes, graduations, and collaborations—no accomplishment is too small. We're especially looking for photos and highlights that capture the spirit of your chapter.

Alumni Brothers—we want to hear from you too!

Whether it's a recent CE presentation, career milestone, or a personal life update like a wedding or growing family, we'd love to include and celebrate it. Help us highlight the impact of Phi Delta Chi across the country by sharing your moments with us.

If you have any questions or prefer to submit your photos via email, please contact Project Director for *The Communicator*, Adrian Quezada Gonzalez (pdtc@phideltachi.org) or Grand Vice President for Communications, Samantha Marion (gvpc@phideltachi.org).

[Submit Here!](#)

.....

🕒 Final Chance to Nominate: Schlegel Leadership Development Award



Pharmacy
Leadership &
Education
Institute



Thanks to the generosity of Alpha Psi alumnus Jack Schlegel and his wife, Priscilla, PLEI established the Schlegel Leadership Development Award to recognize collegiate Brothers of Phi Delta Chi who demonstrate exceptional leadership potential in the pharmacy profession. The award includes a \$1,000 honorarium and is open to collegiate Brothers who are concluding their final professional year of study in 2026.

We encourage you to identify and nominate a deserving candidate from your chapter for this significant award. It is an opportunity to recognize the outstanding leadership potential of our collegiate Brothers. To be eligible for the award, the nominee must have exhibited exemplary behaviors and actions as a student and professional in training that have gained the respect of their peers.

In establishing the award, Jack noted that many student pharmacists are so focused on working their way through their educational program that they do not have time to take on formal leadership positions with organizations but instead demonstrate their potential by exhibiting leadership in other ways. He distinctly wishes all forms of leadership to be considered for this award.

Once your nominee has been identified, you should work with them to complete the nomination packet. Nomination packets should contain the application form, a personal statement (not exceeding 500 words) from the nominee including a vision of what they aspire to accomplish within 10 years after graduation, and three letters of recommendation addressing the nominee's potential for exceptional leadership in the profession after graduation. One letter of recommendation must come from the Chapter Advisor.

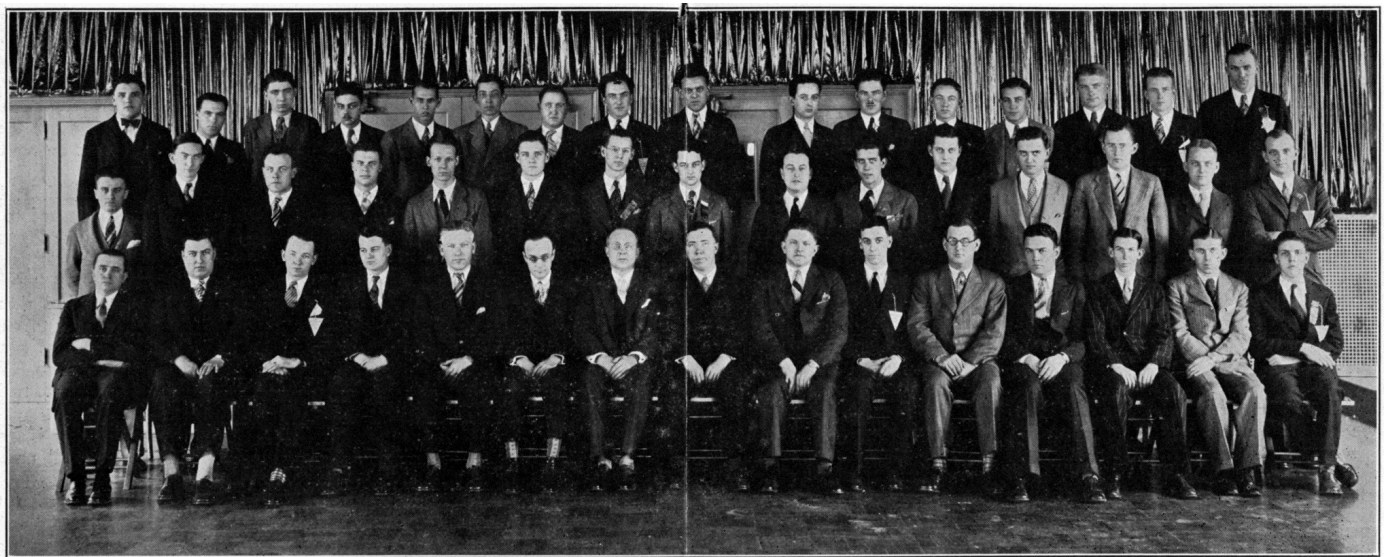
The deadline for receiving nominations is Monday, May 4th, 2026.

The award will be presented by the Pharmacy Leadership & Education Institute (PLEI) at Grand Council in Louisville, Kentucky on Saturday, August 1, 2026.

The pathway for submitting nomination packets can be found at <https://plei.org/schlegel/>.



HISTORY CORNER



Rear Row, left to right: Liddell, Alpha Eta; Lloyd, Alpha Delta; Webb, Alpha Beta; Daniels, Alpha Beta; Collins, Alpha Beta; Langston, Alpha Beta; Reams, Alpha Beta; Mathews, Alpha Beta; Jopling, Lambda; Kessler, Alpha Alpha; Shuler, Upsilon; Duncan, Rho; Green, Zeta; Pexa, Theta; Nicholson, Chi; Johnson, Omega.
Middle Row: Wagner, Gamma; Baumgardner, Alpha Beta; Hamilton, Xi; Dayvault, Alpha Gamma; Mitchell, Alpha Zeta; Fraser, Upsilon; Setler, Mu; French, Theta; Kirchgessner, Alpha; Cook, Omicron; Benesh, Nu; Geesey, Iota; Purdum, Iota; Olson, Xi; Clifton, Omega.
Front Row: Powers, Alpha; Kriebs, Nu; Kime, Epsilon; Bressler, Psi; Nichols, Grand Treasurer, Rho; Galloway, Grand Vice President, Psi; Edward Spease, Grand President, Xi and Alpha Alpha; Heustis, Grand Secretary, Alpha; Hollenback, Editor-in-Chief, Xi; Stone, Alpha Beta; O'Day, Sigma; Heffron, Phi; Tripplett, Alpha Eta; Ford, Alpha Zeta; Peacock, Omega.

As we look ahead to the 77th Grand Council this summer, we return to Louisville, Kentucky. The last time Grand Council was held in Louisville was in 1929. Pictured here are several of our previous Grand Presidents including Edward L. Spease (Xi), J. Earle Galloway (Psi), and David W. O'Day (Sigma). At that 29th Grand Council, Brothers gathered with delegates from each chapter to vote on key business matters such as new chapter installations, budget allocations, and dues, which were only \$9.00 at the time. Historical records also reflect ongoing discussions around increasing alumni engagement to support the continued success of both collegiate chapters and the Fraternity as a whole. At the 29th Grand Council, 501 active members were reported. Today, the Fraternity has grown to nearly 4,000 active members. As we prepare to return to Louisville nearly 100 years later, it is important to reflect on our history and recognize how far our Brotherhood has come.



AAAE CAMPAIGN

With Grand Council just a few months away, now is the perfect time to maximize your chapter's participation in this year's [AAAE Campaign](#). Chapters can earn free registrations to Grand Council when alumni pay National Alumni Dues, Life Member dues, and AAAE Campaign contributions.

Chapters earn rewards based on participation:

- The first 15 points earned will grant one complimentary Grand Council registration
- Additional registrations can be earned for every 25 points accrued beyond that

How You Can Help:

- **Alumni:** Pay your 2025-2026 [National Alumni Dues](#) and help send a collegiate Brother to Grand Council
- **Life Members:** Consider [making a donation](#) to the AAAE Campaign to further support your chapter
- **Collegiates:** If your chapter is close to earning a registration, reach out to your alumni network and encourage their participation

The following chapters have already earned one free registration to this summer's Grand Council:

- Tau
- Psi
- Omega
- Alpha Nu
- Beta Zeta

Thank you to all alumni who have already shown their support—your contributions are making a meaningful impact. Let's continue building momentum and ensure strong representation at Grand Council!

[Current AAAE Campaign Standings](#)



EC ACTIONS

Executive Council actions are available at any time on GreekTrack. To access them, navigate to Files > Shared by National Office > Executive Council Action Items, then select the year and month you are looking for. Please feel free to review these documents as needed to stay informed on recent decisions and updates.

- [April 19th, 2026](#)



CATCH THE LATEST & GREATEST- FOLLOW US!

[Instagram](#), [Facebook](#), [TikTok](#), [LinkedIn](#), [Discord](#)

Previous editions of the [*e-Communicator*](#)